



Community and Indigenous Engagement Plan

Tilbury Battery Energy Storage System Projects

September 26, 2022
Revised November 25, 2022



Table of Contents

1	INTRODUCTION	1
2	COMMUNICATIONS APPROACH.....	2
2.1	Engagement Objectives	3
2.2	Engagement Process	3
3	IDENTIFICATION OF STAKEHOLDERS AND OUTREACH STRATEGIES.....	5
3.1	Stakeholders	5
3.1.1	Municipalities and Elected Officials	5
3.1.2	Essex Region Conservation Authority	6
3.1.3	Government Agencies	7
3.1.4	Utilities	7
3.1.5	Indigenous Communities	Error! Bookmark not defined.
3.1.6	Members of the Public and Organizations	7
3.2	Overview of Proposed Consultation Activities	8
3.2.1	Public Notices	8
3.2.2	Public Meetings	8
3.2.3	Meetings	9
3.2.4	Project Website	9
3.2.5	Record of Consultation	9
4	CONCLUSION	10

1 Introduction

Boralex has been present in the Ontario energy market for over 10 years and is committed to building sustainable relationships based on transparency, communication, and respect for the communities hosting its projects. As a developer and long-term operator, Boralex makes every effort to establish sustainable relationships with the host communities and to respect the environment from the moment a project begins to take shape. This is a testimony to the long-term vision to which Boralex subscribes, working earnestly and diligently to ensure that its projects are received well in the region and effectively integrated with host communities for the duration of their operating lives.

The following describes the Community and Indigenous Engagement Plan (Engagement Plan) associated with the Tilbury North and South Battery Energy Storage Systems (the Projects) and supports an open and inclusive public process.

This Engagement Plan identifies strategic steps to maintain transparency throughout the Projects' development, construction, and operation, reflects an understanding of local interests and concerns, and proposes a frequency and duration for future outreach activities.

The Engagement Plan will address and build upon the public engagement requirements as set out in the Independent Electricity System Operator (IESO) Long Term (LT) and Expedited (E-LT) Request for Proposals (RFP) and in support of the requirements of the Class Environmental Assessment for Minor Transmission Facilities (MTF Class EA), considering general best practices for consultation and engagement.

2 Communications Approach

As a developer and operator, Boralex establishes connections with local stakeholders early to best understand their values and concerns of the community so that our projects are designed to integrate with and enhance the surrounding area for the duration of their operation.

Boralex has also developed this Engagement Plan based on best practices for engagement in accordance with the Ministry of the Environment, Conservation and Parks' (MECP) Code of Practice: Consultation in Ontario's Environmental Assessment Process. The plan will provide structure and guidance to support effective communication related to internal Project coordination and external engagement. Following this Engagement Plan allows us to truly understand local interests, so we have the opportunity to address concerns well before construction is underway.

The following describes the strategic steps we have and will take to maintain an open and inclusive relationship throughout our Projects' development, construction, and operation:

- Identify a contact list of relevant stakeholders, government agencies, and Indigenous communities, updating this list as the MTF Class EA process proceeds (see Section 3 for identification of stakeholders).
- Set milestones to provide advanced notification to stakeholders, government agencies and Indigenous communities of engagement opportunities and key Project milestones.
- Engage with the stakeholders identified as soon as possible to share valuable information.
- Build trust through transparent and open dialogue.
- Track and document engagement activities, comments received, and their influence on the Projects.

2.1 Engagement Objectives

The Engagement Plan provides an outline of engagement opportunities for interested parties so that the Projects are well understood by potentially affected stakeholders and their feedback and concerns can be considered and incorporated into Projects planning, to the extent practicable. See Section 3 for identification of stakeholders. With that in mind, the following objectives for engagement have been developed:

- Provide consultation opportunities that address the particular interests and needs of stakeholders (including targeted materials and discussions for the public, property owners, government agencies and Indigenous communities, as appropriate)
- Provide for timely, open, transparent, effective, consistent, and proactive communications
- Foster and maintain positive and constructive relationships with parties that may be affected by decisions regarding the scope of the Projects
- Build trust, understanding and support for the Projects.

2.2 Engagement Process

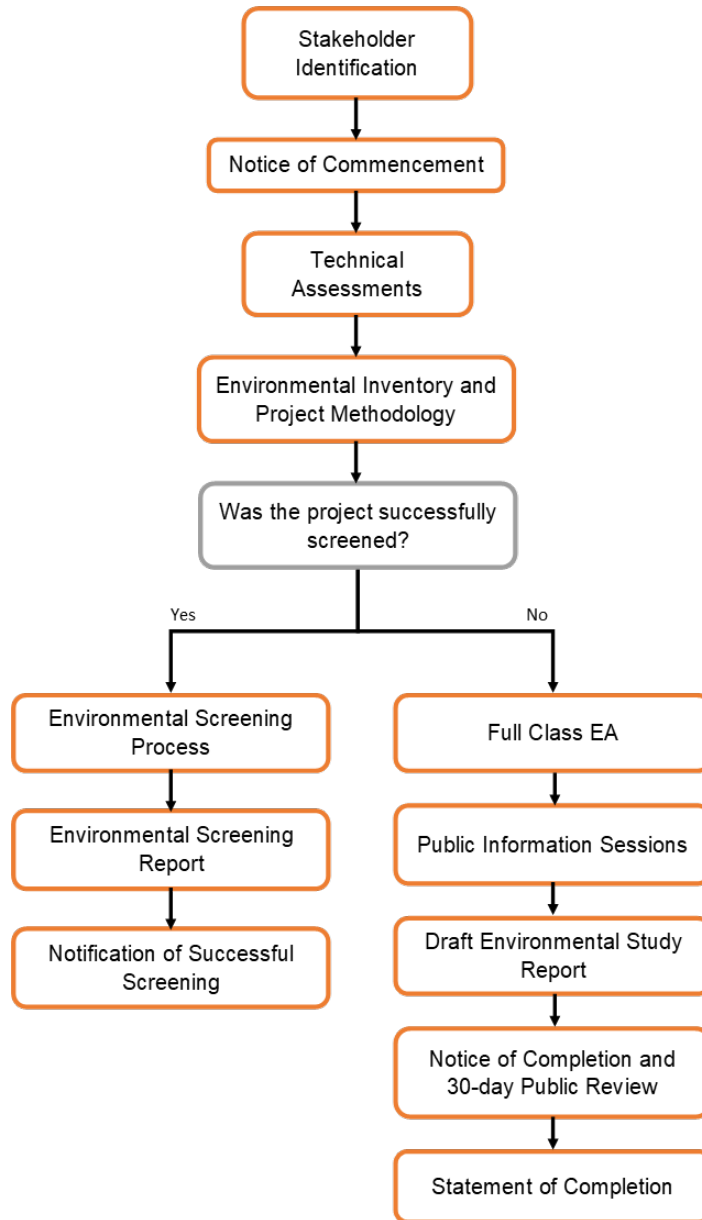
Boralex has started engaging with some stakeholders and is committed to engaging with all interested parties to discuss how the Projects fit into the local community, stakeholders' underlying values and concerns, expected timelines, and next steps for the Project. Meetings will continue throughout the development process to keep the public updated on the Projects' status and to solicit feedback.

To align with the IESO E-LT RFP submission requirements and timeline, an open house was held on November 3, 2022, to solicit feedback from interested stakeholders on the initial Projects' details. The Notice of Commencement detailed the open house information including, date, time, and location. Mail invitations were sent to citizens living near the Projects and an ad was run in the local outlet Tilbury Times this Week.

Figure 2.1 represents the Key Consultation Milestones for the MTF Class EA process. Generally, within the MTF Class EA process there are three primary periods during which feedback will be sought: Notice of Commencement, MECP 30-day review (draft technical studies) and Notice of Completion. However, Boralex believes engagement is to be ongoing throughout the life of the Project and will meet stakeholders on an as-needed basis in advance of, through the duration of the MTF Class EA process, and throughout the life of the Project.

Boralex will confirm the optimal approach to meet both the IESO E-LT RFP and the MTF Class EA requirements for the Projects, including engagement points required to meet consultation objectives, and the number of public meetings.

Figure 2.1 Key Consultation Milestones for the MTF Class EA



3 Identification of Stakeholders and Outreach Strategies

The contact list for the Projects is expected to evolve throughout the life of the Projects, based on the level of interest expressed by individuals or additional guidance received by government agencies during the life of the Projects.

The following subsections provide a preliminary list of expected interested parties by group (e.g., government agencies, municipalities, Indigenous communities, etc.) and an overview of proposed methods to engage stakeholder groups.

3.1 Stakeholders

In the preliminary stages of development, Boralex conducts a detailed analysis of the host community, identifying and meeting with key local stakeholders. These stakeholders can provide valuable information on zoning, applicable laws, local regulations, as well as local interests and concerns.

Stakeholder groups that will be consulted on the Projects include:

- Landowners
- Property owners within 1000 m of the Project property boundaries
- Indigenous communities
- Non-profit/non-governmental interest groups
- Municipalities and Elected Officials
- Lower Thames Valley Conservation Authority (LTVCA)
- Government Agencies
- Utilities
- Members of the Public and Community Organizations

Contact lists will be regularly updated to include all people or groups who have submitted comments or demonstrated an interest in the Projects and will be notified of Project milestones, events, and opportunities for involvement.

Key strategies and considerations to engage these groups are described below.

3.1.1 Indigenous Communities

For these Projects, potentially interested Indigenous communities may include Aamjiwnaang First Nation, Walpole Island First Nation, Caldwell First Nation, DeshkanZiibiing/Chippewas of the Thames First Nation, Kettle and Stony Point First Nation, and Metis Nation of Ontario.

Boralex has contacted the Ministry of Energy as a part of the MTF Class EA process. If additional communities are added, Boralex will engage with them at that time. Boralex has and will continue to contact Indigenous communities to have monitors attend archaeological and/or environmental field work.

Project information, particularly on potential archaeological and environmental impacts, will be provided by Boralex to the communities to determine their levels of interest and additional information on specific areas of interest will be provided as needed. As communities are contacted, they will be asked to confirm their interest, if any, in the Projects, provide input on how they perceive their Aboriginal or Treaty rights to be affected by the Projects, and confirm preferred engagement methods.

Feedback and input received from Indigenous communities regarding any potential impacts on their Aboriginal or Treaty rights will be addressed during the preparation of the Screening Report/Environmental Screening Report (ESR) and incorporated as appropriate into Project design.

3.1.2 Municipalities and Elected Officials

Key municipal contacts include:

- Upper-Tier Municipalities: County of Essex
- Lower-Tier Municipalities: Municipality of Lakeshore (Council, Clerk, Operations, Fire, Economic Development, Planning, Engineering)

Engagement with elected officials will form an important part of the Projects' planning, with a focus on early notification of upcoming activities related to municipal meetings and public communication. Prior to any key consultation activities, elected officials will be made aware of what is planned and be provided with an opportunity to discuss the material that will be presented. Consultation will focus on political awareness, to help manage municipal relationships and identify sensitive issues prior to public release.

3.1.3 Lower Thames Valley Conservation Authority

LTVCA administers the *Conservation Authorities Act* and *O.Reg. 152/06: Lower Thames Valley Conservation Authority: Regulation of Development, Interference with Wetlands and Alterations to Shorelines and Watercourses*. As McGregor Creek is adjacent to the proposed Project, engagement with LTVCA may be required if the Project moves forward.

Early consultation with LTVCA will focus on confirming whether the Project is within their regulated area. If the Project moves forward within LTVCA's regulated area, the next step will be gathering relevant ecological and flood plain information that will be reviewed to identify key environmental constraints and confirm LTVCA areas of interest.

During the MTF Class EA, Boralex will consider the likelihood of potential impacts to features within LTVCA's jurisdiction and consult with LTVCA as necessary to confirm mitigation measures to reduce those impacts.

3.1.4 Government Agencies

Provincial government agencies that may have a regulatory mandate or decision-making authority linked to the Projects will be sent the required notices and can direct Boralex on future correspondence. Following initial contact, identifying the permits and approvals needed for the Projects will be provided for the agencies to confirm that regulatory requirements are met. No federal agencies are anticipated to be included on the contact list given the mandates of the federal agencies and the Project components, anticipated effects, and permits/approvals expected for construction and operations.

Key contact points will include initial Project introductions to confirm interest in the Projects, and ongoing consultation based on each agency's level of interest, regulatory issues raised and appropriate strategies to resolve issues.

Key government agencies that will be consulted on the Projects include:

Provincial Agencies

- Infrastructure Ontario
- Ministry of Environment, Conservation and Parks
- Ministry of Citizenship and Multiculturalism Ministry of Natural Resources and Forestry
- Ministry of Energy
- Ontario Heritage Trust
- Ontario Ministry of Agriculture, Food and Rural Affairs

3.1.5 Utilities

Engagement with utilities will be focused on identifying existing and planned infrastructure based on publicly available information, in order to manage potential conflicts.

Key utilities will include:

- E.L.K Energy Inc.
- Union Gas
- Hydro One Inc.

3.1.6 Members of the Public and Organizations

Public engagement is a specific requirement of the IESO E-LT RFP and the MTF Class EA process and will include the issuance of notices at key Project milestones. In addition, information will be provided to the public focused on simplified communications related to Project plans, potential effects, and mitigation measures, with a core focus on the benefits of the Projects. Local sensitivities will need to be gauged on a case-by-case basis to confirm particular issues and the need for targeted meetings.

Key organizations will include:

- Participating landowners
- Local communities, landowners, businesses, and the general public (within 1000 m of the Projects)
- Other Community Organizations (consumer groups, resident associates, Chamber of Commerce, and interest groups)

3.2 Overview of Proposed Consultation Activities

Stakeholders will be engaged in a number of ways throughout the Projects, including the following general activities.

3.2.1 Public Notices

The following public notices will be prepared if a Screening Report is required:

- Notice of Commencement (which includes the Notice of a Public Meeting)

The following public notices will be prepared and if a ESR is required:

- Notice of Commencement (which includes the Notice of a Public Meeting)
- Notice of Completion

Notices will be posted on the Projects' website (<https://www.boralex.com/projects/tilbury/>) and Boralex will arrange for publishing in local newspapers. Letters and the accompanying notices will be mailed to the Projects' contact list.

Boralex will prepare and submit the Statement of Completion to MECP after the Final Review Period (30 days after the Notice of Completion) is complete, assuming no Part II Orders are received.

3.2.2 Public Meetings

Boralex will hold at least one public open house as required for the IESO E-LT RFP to gather input into Project planning as part of the MTF Class EA process. The need for public meetings may be revisited as the Projects progress, based on issues, trends, and engagement needs. Due to the COVID-19 pandemic and related concerns regarding social distancing and indoor gathering restrictions, the public meeting may be held virtually.

All materials presented to the public will follow *Accessibility for Ontarians with Disabilities Act* (AODA) requirements.

A comment period of 14 days will follow the public meeting. Comments received will be logged and included in the MTF Class EA.

Boralex will keep written documentation of all consultation activities in the Record of Consultation log.

3.2.3 Meetings

Boralex will hold, and remain open to having, ongoing discussions with stakeholders throughout the MTF Class EA process with the intent to solicit feedback on the Projects and resolve any outstanding concerns. Initial engagement will include offers for introductory meetings with key regulators and Indigenous communities, to introduce the Projects and answer questions regarding the Projects.

3.2.4 Project Website

Boralex will maintain a website dedicated to the Projects (<https://www.boralex.com/projects/tilbury/>) with information about the Projects and relevant documents, including contact information.

3.2.5 Record of Consultation

The results of consultation will be recorded in the Screening Report or ESR through key deliverables, including:

- A consultation chapter that outlines consultation activities, comments received during the MTF Class EA process and responses provided, and how consultation has influenced the Projects and the Screening Report or ESR.
- A Consultation Tracking Log (example in figure 3.1) will be maintained by Boralex to track the flow of information conveyed to and received from Stakeholders regarding the Projects, including relevant correspondence, notices and communication items for the Projects. The Consultation Tracking Log will document all consultation activities.

Figure 3.1 Example Consultation Tracking Log Template

Comment Number	Stakeholder Group	Stakeholder Name	Comment Source	Date Received	Comment	Response Date	Response	Status
Unique identifier for each comment	Name of group, agency, community	Name of individual commenter	Media type	Date of incoming comment	Details on comment	Date of outgoing response	Details of response	Action item open, closed or Post-EA

4 Conclusion

Boralex is committed to developing the Projects with complete respect for the local community and the environment. We see ourselves as a long-term partner and will adapt to the stakeholders' feedback and respond to their requirements as well as we can. Boralex development team remains fully available to answer questions and take effective notes of any comments the public may have. Feel free to reach us by phone at 437-421-5238 or by email at info@boralex.com. To learn more about the Projects, visit: <https://www.boralex.com/projects/tilbury/>.