



TOGETHER WE CREATE ENERGY

**BORALEX**

BALD MOUNTAIN SOLAR PROJECT OVERVIEW

PROJECT DESCRIPTION

Bald Mountain Solar is a proposed 20 MW solar project being developed by Boralex in the Town of Greenwich, Washington County. The project will include solar arrays and other project infrastructure such as inverters, site roads, and a substation connecting to National Grid's 115kV line that bisects the project area. Boralex is committed to working with the Town of Greenwich, Washington County, and other local stakeholders to ensure that the project is properly integrated into the community.

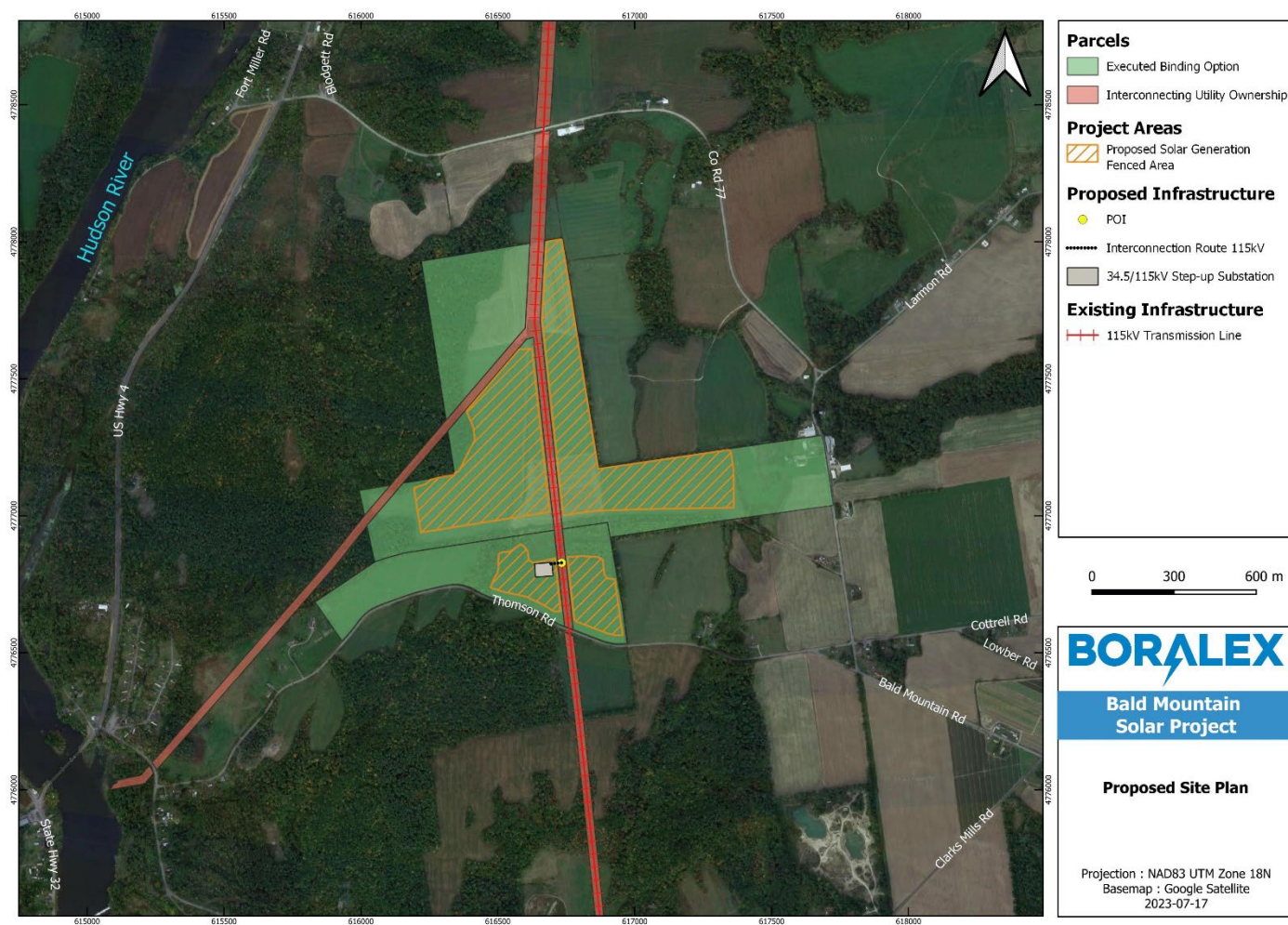
PROJECT DETAILS

General	
Technology	Solar
Capacity	20 MW
Location	Town of Greenwich Washington County
Anticipated Solar Footprint	Approx. 115 acres
Construction	Estimated Q2 2024
Operating	Estimated Q2 2025
Point of Interconnection	Where power lines cross Plank Road
Number of Homes Powered	Approx. 5,500 homes

PROJECT BENEFITS

The project will offer significant economic, social, and environmental benefits to New York State, the Town of Greenwich, and Washington County, including:

- Provide significant tax **revenues** to the Town, County and local school districts
- Create approximately **50 full-time equivalent jobs** during construction
- During construction **materials and services will be procured locally**
- **Boost local economy** and add commerce for local businesses during construction and the operation
- Help NYS achieve its goal of **70% clean power generation by 2030**



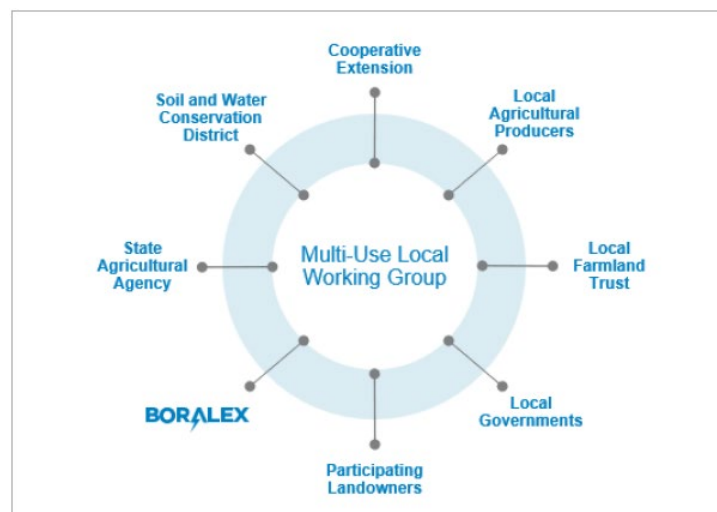
AGRICULTURAL MULTI-USE

Borex is committed to designing our projects in a way that will allow for continued agricultural use within our project site.

Using single-axis tracking allows our solar panels to pivot toward the sun throughout the day, leaving substantial open space between the rows, up to 25 feet depending on final project design.

Building off experience at our facilities in France and California, sheep grazing will be used to maintain vegetation at Bald Mountain Solar.

Borex will also convene a local working group, made up of farmers and other experts, to evaluate multi-use options on the site throughout the life of the project.



PROJECT UPDATES

The latest project information and updates are available at:
www.borex.com/projects/bald-mountain

BORALEX
Beyond
RENEWABLE ENERGY